



Erie Station Business Park
INDUSTRIAL COMMERCIAL
PROUDLY OFFERED BY KONAR PROPERTIES

— 75 Thruway Park Drive —

Class A Office Space for Lease

10,450 sq. ft.



To schedule a visit, contact Michael Trojian:
(585) 334-4110 or MTrojian@KonarProperties.com



Class A Office Space for Lease

— 10,450 sq. ft.—

Class A office space is available in the Williams Mill Office Center, located in Erie Station Business Park in West Henrietta. The office space is two levels, featuring 14 offices, two conference rooms, a reception area, kitchenette, and a café situated in a two-story atrium with a beautiful view.

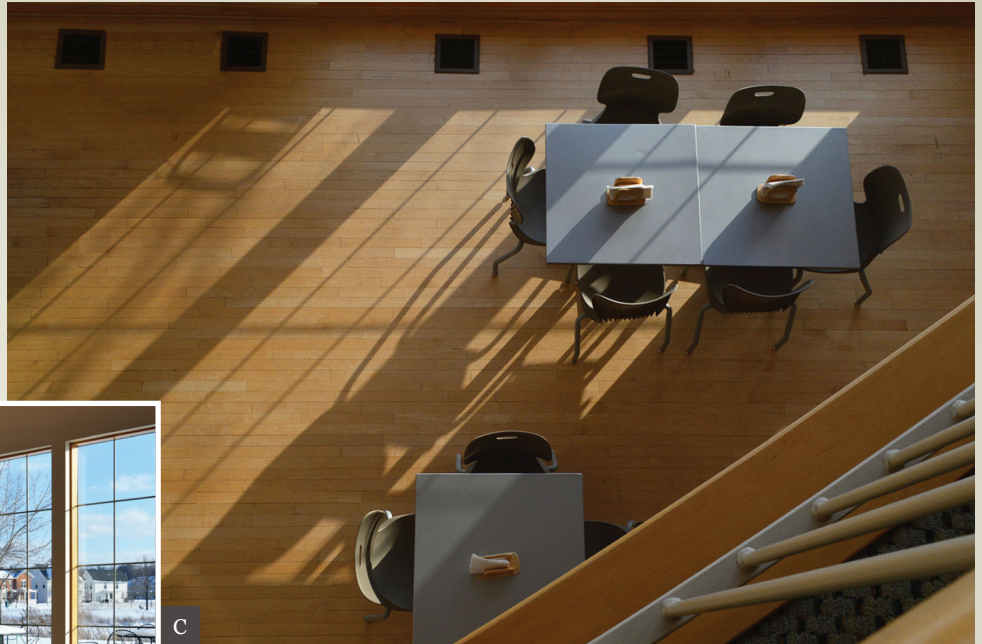
Erie Station Business Park is in close proximity to I-390, I-90 and local amenities, and ample surface parking is available.

To schedule a tour, call Michael Trojian at (585) 334-4110.





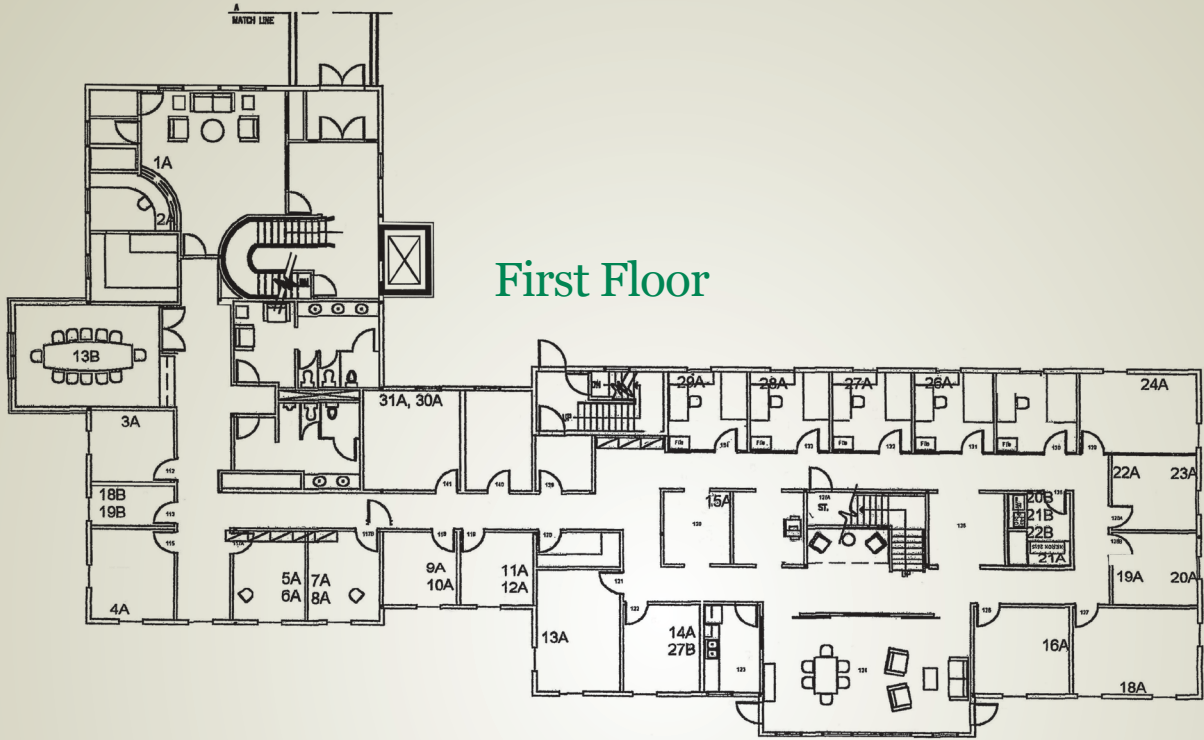
Erie Station Business Park
INDUSTRIAL COMMERCIAL
PROUDLY OFFERED BY KONAR PROPERTIES



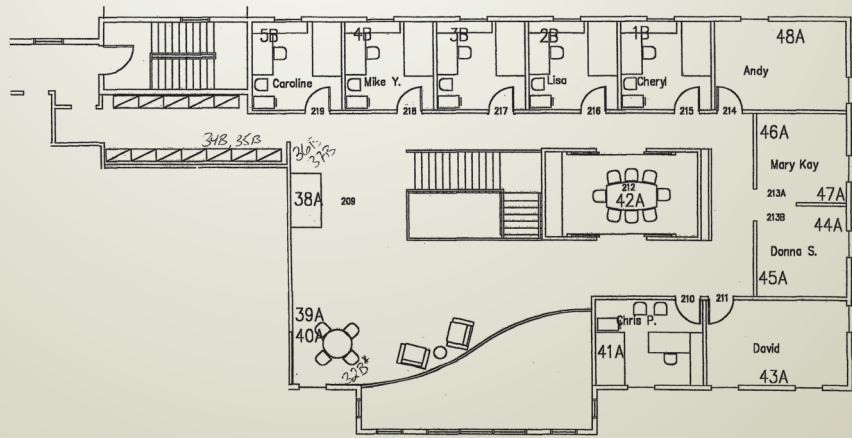
- A. Staircase adjacent to atrium.
- B. Sitting area.
- C. View of atrium from second floor.
- D. Sitting area/ café on first floor.
- E. First floor conference room.
- F. Office space with a view of the pond.



To schedule a visit, contact Michael Trojian:
(585) 334-4110 or MTrojian@KonarProperties.com



First Floor



Second Floor



Erie Station Business Park

INDUSTRIAL COMMERCIAL
PROUDLY OFFERED BY KONAR PROPERTIES

75 THRUWAY PARK DRIVE | WEST HENRIETTA, NY 14586 | ERIESTATION.COM



To schedule a visit, contact Michael Trojian:
(585) 334-4110 or MTrojian@KonarProperties.com